

MP-S201

MASTERPIECE STEREO AMPLIFIER

MASTERPIECE SERIES



VITUS AUDIO

FOREVER NOW

Awesome power meets astounding sensitivity.

'Competitor' is really not a very meaningful term when it comes to our elite Masterpiece Series. But another manufacturer might well have been deterred by the task of creating our colossal MP-S201 stereo power amplifier.

One of our industry partners described it as having 'more Class A grunt than you can shake a stick at'. But while weighing in at 125kg, its many admirers agree that it's an inspiring demonstration of something far more cultured than raw power. Rather, electronic ingenuity, an almost obsessive attention to detail, and a majestic evocation of the emotional truth of great music.

Although derived from the conceptual framework of its Signature Series relative, building our range-topping two-channel amplifier demanded that we first designed an entirely new toolbox. It was among our self-imposed criteria that the MP-S201 should be exclusively 'hand-made in Denmark', so to source components from outside our country would have been an unacceptable betrayal of principle.

The result has been a triumph. The amp registers zero global negative feedback. The 4.5KVA UI transformers register less than a 2% loss. The boards are 2.2mm thick with 105um copper on every layer while the digital control circuitry is entirely discrete, its own power supply fed from a separate power cord. And thanks to intelligent Class A bias, the output stage enjoys a constantly optimal working environment.

While the MP-S201 is first and foremost a stereo amplifier, it also offers a mono mode to the owner requiring bi-amping.

Lastly, its modular architecture will allow future upgrades to preserve and extend its working lifetime.

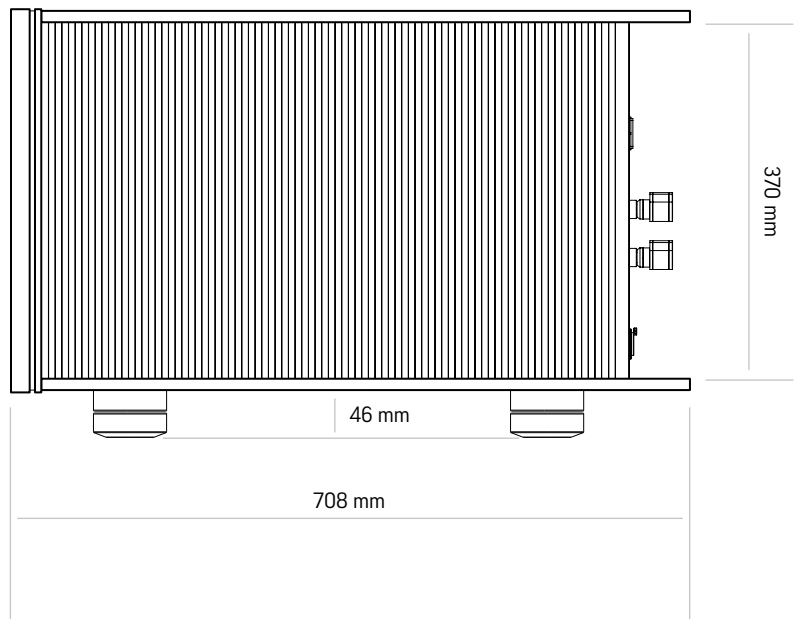
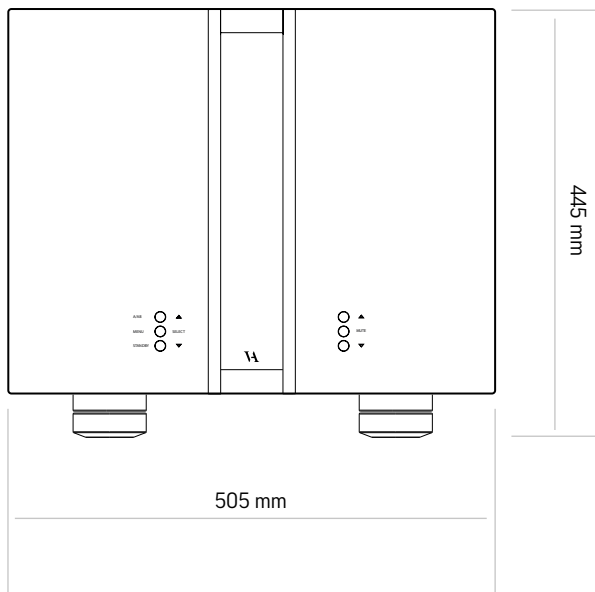
The MP-S201 immediately invoked a hugely enthusiastic response from the world of high-end audio, which agreed that it had no equal – an accolade which promises to pertain for many years to come.

INPUT	XLR Stereo	XLR Mono
Available	1 (L+R)	1
Sensitivity	0.7 V _{RMS}	0.7 V _{RMS}
Impedance	10kΩ	10kΩ
OUTPUT (Each ch.)	Speaker	
Available	1	
Impedance	0.075Ω	
Power W _{RMS} (8Ω)	~25W Class A / ~500W Class AB	
Power W _{RMS} (4Ω)	~50W Class A / ~1000W Class AB	
Frequency response	+800kHz	
Signal to noise ratio	>130dB	
THD + noise	<0.01%	
POWER CONSUMPTION		
Standby	<1W	
Full power	550W	
DIMENSIONS		
Height	445mm	
Width	505mm	
Depth	708mm	
Weight	~125kg	

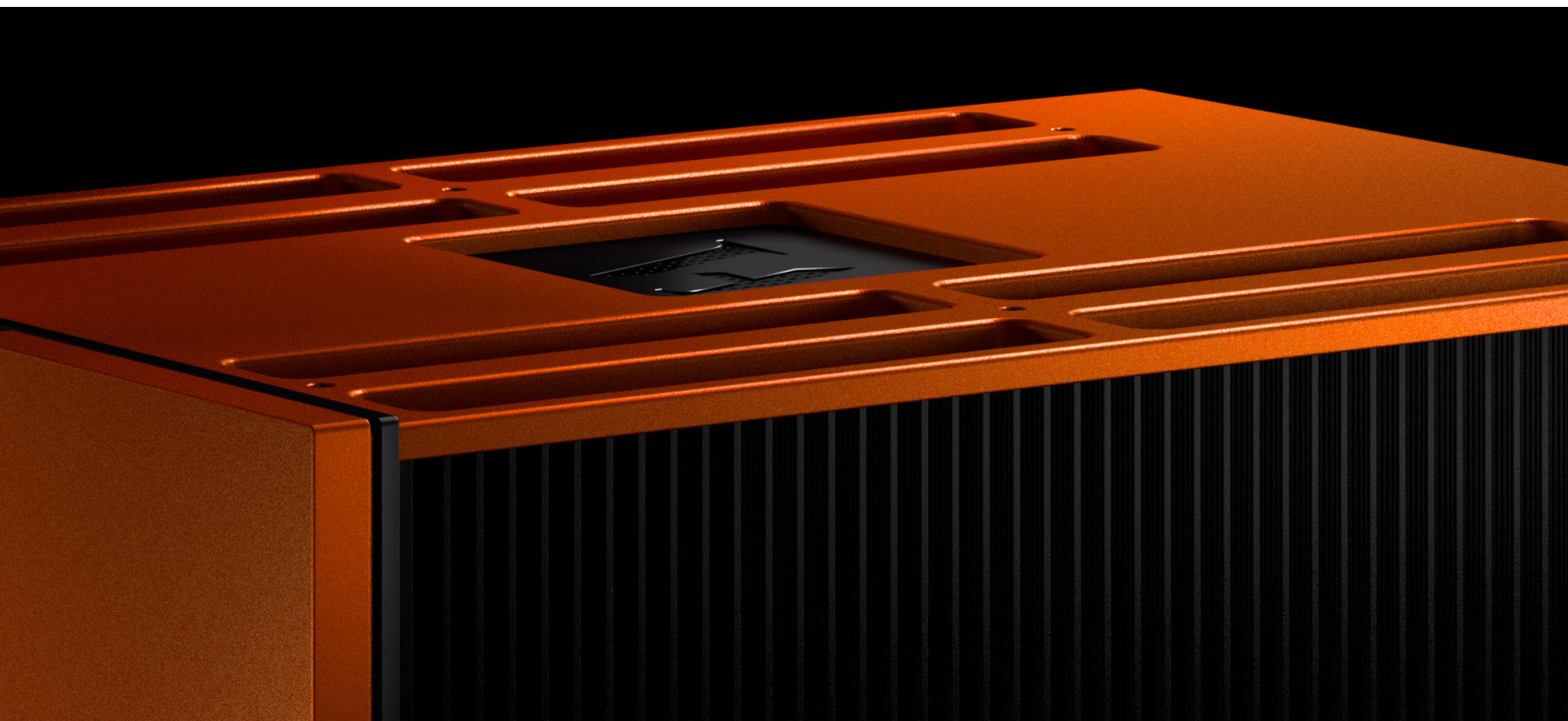
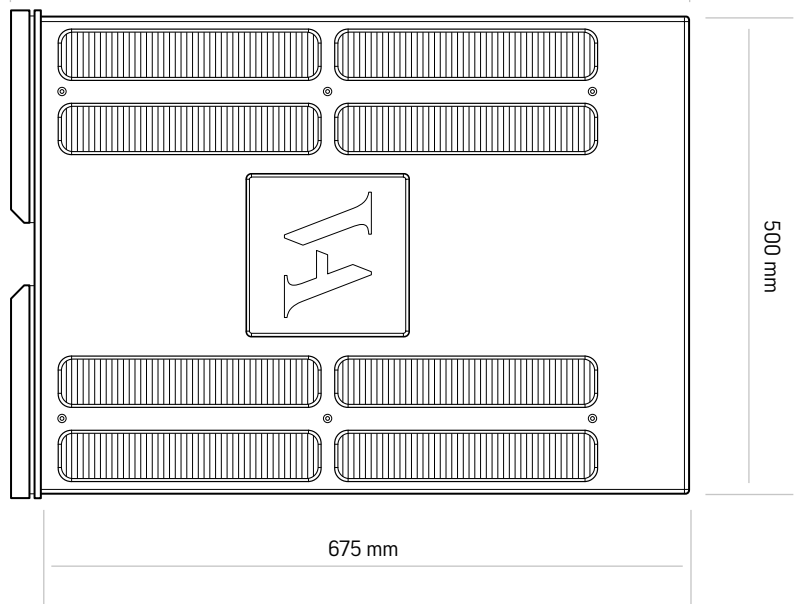


MP-S201

DEVICE OVERVIEW



Material: Aluminium for body parts and heat sinks
Dimensions (H x W x D): 445 x 505 x 708 (mm)
Weight: ~125kg
Feet: Stillpoints Ultra 5





VITUS AUDIO

FOREVER NOW



A/AB ● ▲
MENU ● SELECT
STANDBY ● ▼

MP-S201



● ▲
● MUTE
● ▼